



The LATI News



LOUISIANA ASSISTIVE TECHNOLOGY INITIATIVE

INSIDE THIS ISSUE:

| | |
|--------------------------|---|
| GROUP NEWSLETTER | 2 |
| 2011 SUMMER INSTITUTE | 2 |
| IPAD AS MULTI-FUNCTIONAL | 2 |
| AT OFF THE SHELF | 3 |
| UPCOMING PD | 3 |
| FREE RESOURCES | 4 |
| SPOTLIGHT ON AT | 5 |
| COOL STUFF | 5 |
| AT CENTER CONTACT | 6 |
| UPCOMING TRAININGS | 6 |

LATAN RECOGNIZES DONNA BROUSSARD & THE LDE

Each year the Louisiana Assistive set up the AT program there and was Technology Access Network (LATAN) active on the state's committee for recognizes an individual or agency for planning the initial course of action their work in increasing access to for initiating the use of technology environments for individuals who use with disabled students. From this, the assistive technology (AT) and/or for LATI regional centers were developed. expanding the awareness and She is also involved in developing implementation of universal design to procedural guidelines for the use of improve access for all. AT in schools, planning several state

This year, Donna Broussard and the Louisiana Department of Education development training for Accessible (LDE) have been selected to receive Instructional Materials (AIM) by the the 2010 Agency Champion Award for AT Centers. Assistive Technology.

Donna has been involved in implementing AT beginning in the early 90's in St. Charles Parish. She

CONGRATULATIONS DONNA!!



Contacts

LA Department of Education

Dr. Jackie Bobbett

Donna Broussard

225-342-3730

Region 6 LATI Center

Charlotte Ducote

337-234-7187

District AIM Liasons

District Competent Authorities

LOUISIANA AIM UPDATE

Our state is showing significant strides with acquiring and implementing AIM for our print disabled students. Districts have begun utilizing the state approved ordering process to expedite the delivery of textbooks in alternate format. They also are taking advantage of Bookshare.org that provides free books to students with qualifying disabilities. An Open Forum is being scheduled in February to offer districts an opportunity to

share experiences, as well as, to offer assistance with specific topics such as 504 issues, Blind and VI needs, and AIM for significant disabilities. Hot off the press is the news that NIMAS files can now be read on an iPad, Nook, or iTouch using the DAISYtoEPUB converter from Don Johnston. For more information on how you can acquire AIM for your students, call any of our regional AT centers or Charlotte Ducote at 337-234-7187.





GROUP NEWSLETTER

Starting with this newsletter, the LATI Regional Centers are combining forces and composing one newsletter. More great information can be sent out to you more often. The newsletter will be disseminated once a month. Each edition will include upcoming

events and trainings. It will also feature new trends in AT as well as lots of **FREE** stuff. One feature to be added is to spotlight a district's success or implementation of AT in their schools. Please contact your regional center with the details. *Your success may inspire others.*

LATI Regional Centers



The Louisiana Assistive Technology Initiative (LATI) Summer Institute will be hosted by the Region V LATI Center this year. Get ready to travel to Lake Charles for great

2011 LATI SUMMER INSTITUTE

information on how to incorporate assistive technology into your classroom. Popular sessions from previous Summer Institutes include *AT Tools for Students Struggling with Math, Accessibility Apps for the iPhone & iTouch, Smilebox + Video*

Modeling = A New Innovative Way to Teach! and *Free AT from A 2 Z*, just to name a few. Registration will be open March 1, 2011, so mark your calendar and register early to reserve your spot at this free institute!

THEME
AT²(RTI + DI) = ACCESS

DATES
JUNE 21 - 23, 2011

WHERE
LAKE CHARLES, LA

REGISTRATION
MARCH 1, 2011

CONTEST INFORMATION
COMING SOON



USING THE IPAD AS A MULTI-FUNCTIONAL DEVICE



Many of you have heard about the new craze of using the iPad as a Augmentative Communication Device by purchasing the app

Proloquo2go. However, what about the student that needs multiple devices. That higher functioning non-verbal student that not only needs a way to communicate but also a way of written expression. By purchasing the Documents To Go app, the iPad can be used as a

portable word processor. The student can open the app and create a MS Word document by either using the onscreen keyboard or using the wireless keyboard offered by Apple. Once the document is created it can then be sent to the teacher via e-mail or printed using one of the



many mobile printer applications.



AT STRAIGHT OFF THE SHELF

Crayola Sound Studio

Sounds: Farm Animals, musical instruments, jungle animals, transportation, beach, and dinosaurs

Description: This interactive coloring pad lets you choose from 60 sound effects and place them anywhere on any Color Wonder coloring page! Create endless sound combinations that play back when you color your picture!

Assistive Technology Applications: Teachers can utilize this inexpensive device with switch users for participation goals. Using the farm animal sound effects card, create an overlay in Boardmaker or Microsoft Word with common farm animals.

Activity Examples:

1. During song time, allow non-verbal students to participate by touching the animal's picture during the Old Mac Donald's song. **"Moo, Moo here and a Moo, Moo there."**
2. Read a story about farm animals and allow student to provide sound effects.



Where to Buy: Wal-Mart- \$22.97 Amazon - \$22.97 www.crayola.com



UPCOMING PD OPPORTUNITIES



1. LACUE Conference

This conference is 3 days of technology overload. Featuring Vicki Davis and Leslie Fisher. Many great prizes will be given away.

WHEN: December 1 - 3, 2010

WHERE: River Center, Baton Rouge

REGISTRATION: www.lacue.org/conference/index.htm

sessions pertaining to literacy for preschool/kindergarten students with disabilities.

WHEN: January 25—26, 2011

WHERE: Baton Rouge

REGISTRATION: www.solutionwhere.com/ldoe/cw/showconference.asp?2698

2. inclusionMATTERS 2010

This statewide conference will providing parents, teachers and administrators learning opportunities about best practices in inclusive schooling and access to general curriculum for students with disability labels.

WHEN: December 8 - 9, 2010

WHERE: CajunDome in Lafayette, LA

REGISTRATION: <http://tinyurl.com/LAinclusionMATTERS-2010>

5. Quality Indicators: Access to Literacy for Students with Significant Disabilities

This workshop, presented by Dr. Caroline Musselwhite, will provide an overview of the Quality Indicators in their draft form, with a primary focus on the areas of assessment and instruction.

WHEN: January 27, 2011

WHERE: First Baptist Church, Baton Rouge

REGISTRATION: www.solutionwhere.com/ldoe/cw/showcourse.asp?2848

3. LACEC Super Conference 30

Final information about conference sessions is not yet available.

WHEN: January 24 - 25, 2011

WHERE: CajunDome in Lafayette, LA

REGISTRATION: www.lacec.org

6. Write On, Write Now: Emergent Writing

This workshop, presented by Dr. Caroline Musselwhite, will cover emergent writing for students who use symbols, words, or developmental spelling approaches. This workshop supports beginning writers of all ages.

WHEN: January 27, 2011

WHERE: LA Wildlife & Fisheries Building, Baton Rouge

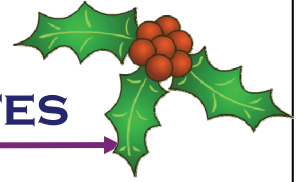
REGISTRATION: www.solutionwhere.com/ldoe/cw/showcourse.asp?2847

4. 2011 Preschool and Kindergarten Conference

This LDE sponsored conference will feature Dr. Caroline Musselwhite and Dr. Vicky Roy who will present



FREE RESOURCE WEBSITES



QuickPics

www.patrickecker.org/quickpics.htm

A **FREE** software program to develop communication and language boards. The program allows you to design boards to meet the needs of the child.



Twisty Noodle

<http://twistynoodle.com>

Thousands of free coloring pages and practice writing worksheets.

A Math's Dictionary for Kids

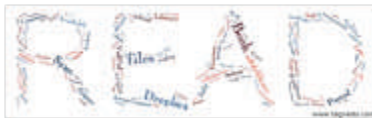
www.amathsdictionaryforkids.com/dictionary.html

Free interactive website that illustrates the meanings of math vocabulary words.



Tagxedo

www.tagxedo.com



Create word clouds using customized shapes; great for visual vocabulary building.

Picto Selector

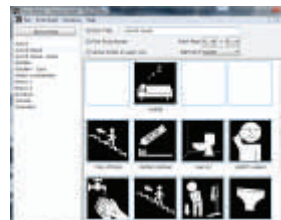
www.pecsforall.com/pictoselector/index_en.html

Free visual supports you can make for your students.



101 Ways to Use Tagxedo

<http://bit.ly/101tagxedo>



Tazti

www.tazti.com/index.html

Speech Recognition Software; use to control the computer with your voice.



DonnaYoung.org Pintables and Resources

<http://donnayoung.org/index.htm>

This website provides numerous math and writing resources, including organizational and student templates.....for free.





Low Tech

MATH FACT PENCILS



Colorful pencils with multiplication fact table printed on the surface. Remember to use the same color coding in word problems or with operation signs used with the pencil.

www.onionmountaintech.com

Mid Tech

BOOST™



The perfect classroom tool for your students with limited vision. This personal video magnifier features a durable design and child-friendly interface.

Your students will be up and running in minutes. Just watch as your students Boost their reading and comprehension!

www.abelnetinc.com

High Tech

DYNAVOX MAESTRO



The Maestro is a multi-language rugged AAC device which allows users to have the freedom to say anything they want anywhere they want to say it. It connects to the internet through WiFi or Bluetooth and can run any Windows 7 applications. It also has a built in digital camera to share memories with family and friends.

www.dynavotech.com/products/maestro/

Cool Stuff

INTEL READER AND CAPTURE STATION



The latest from Intel is the camera/reader plus the capture station option for those students with disabilities. The Intel Reader provides the user with a very simple set of operating instructions. Just Point, Shoot, Press and Listen. The capture button has a voice command to let the user know at which stages the device is capturing the image.

The device is light weight just a little over a pound. Very portable and has the ability to store up to 85 pages of photographed text. The device is also designed to be used while it is still in the case. The photographed files can also be stored in many categories, such as library, favorites, etc. These text files can also be converted to audio files.

Also, the user can navigate within the document by word, sentence, paragraph, or page. File formats that are supported by the device include Daisy, MP3 or WAV music. The USB port makes it easy to transfer files from the device to a personal PC or USB drive.

The capture station is beneficial for those individuals who are unable to hold the book open and use the device at the same time. The stand folds up nicely to resemble a small brief case. The Intel reader enhances independence for people with reading-based learning difficulties such as dyslexia, low vision, or blindness by providing convenient and flexible access to a variety of printed materials.

A video demonstration can be seen at <http://www.youtube.com/watch?v=aYB24njwBW8>.



REGIONAL ASSISTIVE TECHNOLOGY CENTERS

REGION 1

Renee Spratt
rspratt@ppsb.org 8342 Hwy 23
Belle Chasse, LA 70037
Katherine Shea
kshea@ppsb.org 504-595-6071
(fax) 504-394-1431
<http://R1ATCenter.eboard.com>

REGION 2

Anita Lee
anitalee@ipsb.net 58060 Plaquemine Street
Plaquemine, LA 70764
Danna Bouey
dannabouey@ipsb.net 225-687-5400 ext. 183
(fax) 225-687-7390
www.region2at.org

REGION 3

Sharon Edwards
sharon.edwards@apsb.org 611 N. Burnside Ave.
Gonzales, LA 70737
Kristie Stapler
kristie.stapler@apsb.org 225-391-7278
225-391-7279
225-621-2525 (fax)
www.lati3.com

REGION 4

Charlotte Ducote
charlotte@atanswers.com N. P. Moss Annex
801 Mudd Ave.
Tammy Dupre
tammy@atanswers.com Lafayette, LA 70501
337-234-7187
(fax) 337-234-7188
www.atanswers.com

REGION 5

Kay Bolen
kay.bolen@cpsb.org 1724 Kirkman St.
Lake Charles, LA 70601
Anissa Fontenot
anissa.fontenot@cpsb.org 337-217-4120 ext. 1023
(fax) 337-217-4121
<http://bb.lati.cpsb.org>

REGION 6

Charlotte Ducote
charlotte@atanswers.com LA Special Education Center
5400 Coliseum Blvd.
DeWayne LaCaze
dewayne@atanswers.com Alexandria, LA 71306
318-487-5488
(fax) 318-487-5511
www.atanswers.com

REGION 7

REGION 7
Kristie Harvill
kristie.harvill@bossierschools.org 2500 Viking Drive
Bossier City, LA 71111
318-549-6113
318-549-6163
(fax) 318-549-6126
www.region7atc.com

REGION 8

Amanda Tull
amanda.tull@r8at.com 1206 Marion Hwy.
Farmerville, LA 71241
Jessica Wingard
jessica.wingard@r8at.com 888-368-9727
318-368-9727
(fax) 318-368-9774
www.r8at.com



Free Services:
Professional Development
Consultations
Technical Assistance

UPCOMING TRAININGS

DECEMBER

| | | |
|----|--|----------|
| 6 | Text-to-Speech Options | Region 2 |
| 7 | Promethean—Intermediate | Region 4 |
| 7 | Go Write with Animation | Region 5 |
| 7 | AT Demonstration at FHF in Monroe | Region 8 |
| 8 | Get Your Game On! | Region 3 |
| 8 | MS Excel 2007 Basics | Region 6 |
| 9 | Unique Learning System | Region 4 |
| 9 | Kurzweil 3000 | Region 6 |
| 10 | PRAL101: Introduction to ActivInspire | Region 5 |
| 14 | AT for Students with Dyslexia | Region 1 |
| 14 | AT & RTI | Region 4 |
| 14 | A2Z Free Resources | Region 7 |
| 14 | Using iPad/iPod Touch in the Classroom | Region 8 |
| 15 | EBook Make & Take | Region 6 |

JANUARY

| | | |
|----------|--|----------|
| 5 | Intellikeys Keyboard | Region 4 |
| 10/18/19 | AT Math Module | Region 5 |
| 11 | Intellitools Classroom Suite | Region 5 |
| 11/12/13 | Organization and Study Skills 3-Day Module | Region 6 |
| 11 | Accessing the Access Guide | Region 7 |
| 12 | Spectrum Kids Technology | Region 2 |
| 13 | Classroom Suite | Region 4 |
| 13 | Using News 2 You and Unique in the Classroom | Region 8 |
| 14 | Verizon Thinkfinity | Region 2 |
| 18 | Thinkfinity: Free Resources at your Fingertips | Region 1 |
| 19 | UDL Module - 3 Day Module | Region 4 |
| 20 | SymWriter | Region 5 |
| 26 | Clicker 5 | Region 6 |

FEBRUARY

| | | |
|-------|--|----------|
| 2 | Using Technology Pocket Tools | Region 2 |
| 3 | Fun with Foldables | Region 4 |
| 8 | Boardmaker | Region 5 |
| 8 | Flip Cameras in the Classroom | Region 6 |
| 8/15 | AT for Reading Success (must attend both days) | Region 7 |
| 9 | Free Internet Resources | Region 3 |
| 10 | Reaching All Students with Moviemaker | Region 5 |
| 14 | Kurzweil | Region 5 |
| 15 | Low Tech Supports to Access the Curriculum | Region 1 |
| 15 | PRAL101: Introduction to ActivInspire | Region 5 |
| 15 | Digital Camera Basics | Region 6 |
| 16 | Help Me "Read" Anytime—Anywhere | Region 2 |
| 22-24 | AT for Academics 3-Day Module | Region 1 |
| 22 | Introduction to AT | Region 5 |
| 24 | PowerPoints: Not Just for Presentations | Region 3 |
| 24 | Unique Learning System | Region 4 |
| 24 | Access Guide: Adapting Lessons for Sig. Disabilities | Region 8 |
| 25 | Kurzweil | Region 8 |

**Click on Title to register through Coursewhere.
To register for a Region 5 training go to Region 5's website .**