



# The LATI News



LOUISIANA ASSISTIVE TECHNOLOGY INITIATIVE

**INSIDE THIS ISSUE:**

AIM	1
2011 SUMMER INSTITUTE	2
SYMBOLATE READING SUPPORT	2
AT OFF THE SHELF	3
UPCOMING PD	3
FREE RESOURCES	4
SPOTLIGHT ON AT	5
COOL STUFF	5
AT CENTER CONTACT	6
UPCOMING TRAININGS	6

## AIM FREQUENTLY ASKED QUESTIONS

Districts throughout Louisiana are working hard to provide Accessible Instructional Materials (AIM) for students with qualifying print disabilities. As they continue to work on outlining policies and procedures related to AIM many questions have come up regarding accessing and ordering materials as well as verifying students who need AIM. We have listed some of those frequently asked questions below. The AIM Forum scheduled for February 1st and 3rd will also offer districts the opportunity to provide feedback related to current issues they are having in implementing AIM. If you are a part of AIM in your district, you may register at this link-<http://www.solutionwhere.com/ldoe/cw/showcourse.asp?2854>.

**Can a district order digital books directly from the publisher?**

YES! According to Bulletin 1794, Section 511 Districts may order and receive state-adopted textbooks directly from a textbook publisher. Textbooks purchased directly from the publisher must be either the same price or lower than that offered from any other source. This authority covers any formats available directly from the publishers.

**Reminder:** Publishers with state-approved textbooks are under contractual obligations to provide NIMAS conformant file sets which are converted by Authorized Media Producers into student ready versions. They are not however under state obligation to provide other formats, unless NIMAS files are not available.

**Can a district search and download textbooks directly from Bookshare?**

YES! The district will have to set up an account with Bookshare and submit a list of students that have been certified by the competent authority as being print disabled. For instructions on setting up an account in Bookshare, visit the

Membership tab on the Bookshare website at [www.bookshare.org](http://www.bookshare.org).

**Does the district have to submit their textbook order before they can download textbooks that are currently available from bookshare?**

No. They can download textbooks directly from Bookshare if they have certified that the student is print disabled.

**What do districts do with the verification forms once they have been filled out?**

Each district will decide where the verification forms will be kept. Bookshare does not ask for those forms, but leaves the burden of proof on the district.

**What is the suggested time for ordering books in order to have them in a "timely manner" for the following school year?**

Districts should submit their book orders in March in order to have them for the following school year.



**Contacts**

**LA Department of Education**

Dr. Jackie Bobbett

Donna Broussard

225-342-3730

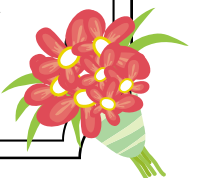
**Region 6 LATI Center**

Charlotte Ducote

337-234-7187

District AIM Liaisons

District Competent Authorities





## 2011 SUMMER INSTITUTE

### DR. DAVE EDYBURN TO PRESENT



The Louisiana Assistive Technology Initiative (LATI) is pleased to announce the keynote speaker for the 7th Annual LATI Summer Institute. Dave Edyburn Ph.D, a well respected educator and researcher possessing an extraordinary range of knowledge and experience in special

education, will join us to kick-off this year's event. His contribution to the field of special education and technology is significant and is reflected in over 150 scholarly articles and book chapters authored by Dr. Edyburn on the use of technology in special education. Contributions to theory, research and practice relative to assistive technology, Universal Designs for Learning and Differentiated Instruction are vast and routinely sought out by many. He is the most recent President of the

Special Education Technology Special Interest Group (SETSIG) in the International Society for Technology in Education (ISTE) as well as a past president of the Technology and Media (TAM) Division of the Council for Exceptional Children (CEC). Currently, Dr. Edyburn serves as a Professor in the Department of Exceptional Education at the University of Wisconsin-Milwaukee. He is a frequent conference presenter and national workshop leader.

**THEME**  
AT<sup>2</sup>(RTI + DI) = ACCESS

**DATES**  
JUNE 21 - 23, 2011

**WHERE**  
LAKE CHARLES, LA

**REGISTRATION**  
MARCH 1, 2011

**CONTEST INFORMATION**  
SUBMISSIONS MUST BE  
MAILED BY MARCH 18, 2011

VISIT  
[WWW.LATI3.COM/CONTESTS.HTM](http://WWW.LATI3.COM/CONTESTS.HTM)  
FOR RULES AND FORMS



## SYMBOLATE TO SUPPORT READING

Are there students in your classroom who are still functioning at the emerging literacy level? Think about using a symbolation program to supplement the text. Symbolation is the process of associating a picture with text. By symbolating text, students can have access to age appropriate materials on their reading level. Some programs that have this feature are Boardmaker, Writing With Symbols, and SymWriter.





**AT STRAIGHT OFF THE SHELF**



**AnyBook Reader**

**Description:** AnyBook Reader allows you to record yourself reading ANY book. In four simple steps your students can be listening to or recording themselves reading a book. First select the book and place the stickers that come with AnyBook reader on each page. Next, activate the sticker and then record your voice. Finally use the AnyBook reader to click on the stickers and listen to the recording.

**Additional Information:**

15 hour edition \$39.99	60 hour edition \$59.99
200 stickers	400 stickers

Requires 2 AAA batteries  
Additional sticker packets \$9.99



**Where to Buy:** Books-A-Million, Borders, Barnes and Noble, School Specialty

**U P C O M I N G P D O P P O R T U N I T I E S . . . . .**

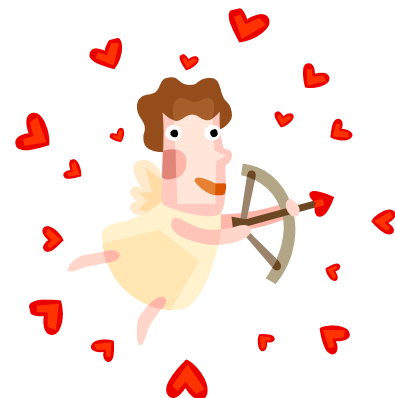


**FOR TEACHERS...**

1. **Spring Into AT**  
When: February 24-25, 2011  
Where: Louisiana Tech University, CREST  
Registration Information: [karter@latech.edu](mailto:karter@latech.edu)
2. **BR Learning Disabilities Conference**  
When: Saturday March 26, 2011  
Where: Redemptorist Elementary  
Registration by email - [ladyslexia@yahoo.com](mailto:ladyslexia@yahoo.com)
3. **LBESPA Annual Continuing Education Workshop**  
When: April 16, 2011  
Where: Crowne Plaza Hotel Baton Rouge, La  
More Information: <http://lbespa.org/>
4. **2011 Solutions for Assistive Technology Conference**  
When: May 4- 6, 2011  
Where: Marriott Hotel Baton Rouge, LA.  
[www.adaptive-sol.com](http://www.adaptive-sol.com)
5. **Autism Summer Institute**  
When: June 7-9, 2011  
Where: New Orleans, LA  
<http://www.hdc.lsuhsoc.edu/lasard/events.html>

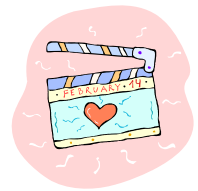
**FOR STUDENTS...**

1. **Creative Scholars Camp**  
5<sup>th</sup> – 9<sup>th</sup> grades  
When: July 19-July 23, 2011  
Where: The Louisiana Center for Dyslexia and Related Learning Disorders, Nicholls State University  
More Information: [www.nicholls.edu/dyslexia](http://www.nicholls.edu/dyslexia)





# FREE RESOURCE WEBSITES



## Turn your iPhone 4 into a Cheap Microscope



Using just a few items, transform your iPhone (or new iPod) into an ultra-portable, inexpensive microscope. With the super-clear retinal display and built-in camera, students can view and take pictures of all the close up discoveries around them. This project is pretty simple. All you need is **SE Mini 45X Microscope w/ Illuminator** (from Amazon.com for \$7.54), **TPU Case for iPhone 4** (from [www.monoprice.com](http://www.monoprice.com) for \$2.80), super glue and an iPhone.



The iPhone 4 works best because of the flat surface on the back. All you're doing is attaching the microscope's viewfinder to your case and securing that to your iPhone. It's that easy. For more information and video instructions, go to <http://crabfuartworks.blogspot.com/2010/09/crabfu-5-iphone-microscope-mod.html>.



## Johnnie's Math Page - <http://imathpage.com>

Johnnie's Math Page is the site to find fun math for kids, math games, and even a little help for math homework. Interactive math activities from across the web have been organized by topic to make math learning enjoyable and interesting.





## Low Tech

### CREAMY CRAYONS



Creamy crayons go on with the slightest pressure and are protected from breakage with their screw-up plastic sleeves. Best of all, if coloring goes "off the paper" these crayons are easily removed with soap and water.

## Mid Tech

### SPEAKING MERRIAM-WEBSTER'S COLLEGIATE® DICTIONARY



A speaking dictionary that allows for instant selection of three different font sizes. This device includes a scientific calculator, expanded organizer and a stopwatch.

## High Tech

### KEYS-U-SEE LARGE KEYBOARD



AbleNet's large print keyboards have been designed specifically for those with conditions that cause visual impairment or low vision, such as: macular degeneration, glaucoma, diabetic retinopathy, cataracts, age related vision loss. With a bigger and bolder typeface, the keys are easier to see.



## UNIQUE LEARNING SYSTEM

[HTTP://UNIQUE.N2Y.COM/](http://unique.n2y.com/)



Unique Learning System (ULS) is a complete, dynamic curriculum program provided monthly for students with special learning needs. ULS comes in five grade

bands: Elementary, Intermediate, Middle School, High School and Transitional. Each month a new thematic unit contains all the materials needed, including leveled reading books. The units are centered on a science or social studies topic and incorporate reading, writing, math, science and history. There are 29 monthly lessons in grade bands Elementary – High School, and 15 monthly lessons in the Transitional grade band. These lessons are aligned with content standards and differentiated into three levels of participation: Level 1 students, who require maximum support; Level 2 students, who require some support; and Level 3 students, who show the potential to learn and have the greatest amount of independence. Student profiles can be created to guide instruction. Online progress monitoring and much more is provided in this curriculum.

Each grade band is based on what should be taught at that age. Each grade band's material is modified, yet age appropriate. Choose the band that corresponds with the chronological age of your class. If you have students in two grade bands, pick the one that has the majority of students and use that for all. There is adequate overlap between the grade level bands to accommodate some grade differences.

Unique Learning System is designed so that all students can participate in the same activity. Differentiated tasks are supported with multiple means of representation: including text, symbolized text and picture formats. Additionally, all leveled books and chapter books are provided in a text-reading format to support the text versions. All materials provide for multiple means of expression, including writing, selecting picture representations and verbal responses. Supports for augmentative communication are also included. Many of the skill applications are presented with real-world scenarios to increase the means for student engagement. All lessons and materials are carefully designed to address a universal format of learning for students with these special needs.

## REGIONAL ASSISTIVE TECHNOLOGY CENTERS

### REGION 1

**Renee Spratt**  
rspratt@ppsb.org 8342 Hwy 23  
Belle Chasse, LA 70037  
**Katherine Shea**  
kshea@ppsb.org 504-595-6071  
(fax) 504-394-1431  
<http://R1ATCenter.eboard.com>

### REGION 2

**Anita Lee**  
anitalee@ipsb.net 58060 Plaquemine Street  
Plaquemine, LA 70764  
**Danna Bouey**  
dannabouey@ipsb.net 225-687-5400 ext. 183  
(fax) 225-687-7390  
[www.region2at.org](http://www.region2at.org)

### REGION 3

**Sharon Edwards**  
sharon.edwards@apsb.org 611 N. Burnside Ave.  
Gonzales, LA 70737  
**Kristie Stapler**  
kristie.stapler@apsb.org 225-391-7278  
225-391-7279  
225-621-2525 (fax)  
[www.lati3.com](http://www.lati3.com)

### REGION 4

**Charlotte Ducote**  
charlotte@atanswers.com N. P. Moss Annex  
801 Mudd Ave.  
Lafayette, LA 70501  
**Tammy Dupre**  
tammy@atanswers.com 337-234-7187  
(fax) 337-234-7188  
[www.atanswers.com](http://www.atanswers.com)

### REGION 5

**Kay Bolen**  
kay.bolen@cpsb.org 1724 Kirkman St.  
Lake Charles, LA 70601  
**Anissa Fontenot**  
anissa.fontenot@cpsb.org 337-217-4120 ext. 1023  
(fax) 337-217-4121  
<http://bb.lati.cpsb.org>

### REGION 6

**Charlotte Ducote**  
charlotte@atanswers.com LA Special Education Center  
5400 Coliseum Blvd.  
Alexandria, LA 71306  
**DeWayne LaCaze**  
dewayne@atanswers.com 318-487-5488  
(fax) 318-487-5511  
[www.atanswers.com](http://www.atanswers.com)

### REGION 7

**Kristie Harvill**  
kristie.harvill@bossierschools.org 2500 Viking Drive  
Bossier City, LA 71111  
**Karrie Bennett**  
karrie.bennett@bossierschools.org 318-549-6113  
318-549-6163  
(fax) 318-549-6126  
[www.region7atc.com](http://www.region7atc.com)

### REGION 8

**Amanda Tull**  
amanda.tull@r8at.com 1206 Marion Hwy.  
Farmerville, LA 71241  
**Jessica Wingard**  
jessica.wingard@r8at.com 888-368-9727  
318-368-9727  
(fax) 318-368-9774  
[www.r8at.com](http://www.r8at.com)



**Free Services:**  
Professional Development  
Consultations  
Technical Assistance

## UPCOMING TRAININGS

### FEBRUARY

2	Teaching Technology w/ Pocket Tools	Region 2
3	Fun with Foldables	Region 4
8	Flip Cameras in the Classroom	Region 6
8 & 15	AT for Reading (2 day module)	Region 7
9	Allen Parish Unique Learning Systems	Region 5
10	Reaching All Students with Moviemaker	Region 5
10	AT & RTI	Region 4
11	Learn & Lunch with LATI-Families Helping Families	Region 5
14	Kurzweil	Region 5
15	PRAI101: Introduction to ActivInspire	Region 5
15	Digital Camera Basics	Region 6
15	Low Tech Supports to Access the Curriculum	Region 1
16	Help Me Read Anywhere Anytime	Region 2
16	Flip Cameras in the Classroom	Region 4
18	AT Contact iPad Training	Region 5
18	AT Contact Meeting – Color Filters training	Region 2
18	Partners in Policymaking – Inclusive Education	Region 2
22	Introduction to AT	Region 5
23	Boardmaker	Region 5
24	Region V iPad Training	Region 5
24	Quick Pics for AAC	Region 7
24	The Louisiana Access Guide	Region 8
24	Unique Learning System	Region 4
24	PowerPoints: Not Just for Presentations	Region 3
25	Kurzweil 3000	Region 8

### MARCH

3	Unique Learning System Make and Take	Region 4
3 & 10	AT for Spelling and Writing (2 day module)	Region 7
15	Microsoft Accessibility Options	Region 1
15	Boardmaker	Region 5
16	Convert, Insert, Design	Region 2
17	WebCan: Using WebCameras in SPED Classrooms	Region 5
23	Microsoft Accessibility	Region 6
26	Learning Disabilities Conference – Text to Speech	Region 2
31	Free Internet Resources	Region 4

### APRIL

5	Boardmaker 6.0 Basics	Region 1
6	Using Boardmaker Add-ons to Create Accessible Instructional	Region 1
6	Promethean Interactive Boards in the Classroom	Region 4
6	Wikis, blogs, Podcasts in the Classroom	Region 6
19	Free Internet Resources	Region 6

**To register for trainings go to: [www.solutionswhere.com/ldoe/cw](http://www.solutionswhere.com/ldoe/cw)  
To register for a Region 5 training go to Region 5's website .**